

SharpShooter Dashboard Documentation

Last modified on: September 7, 2011

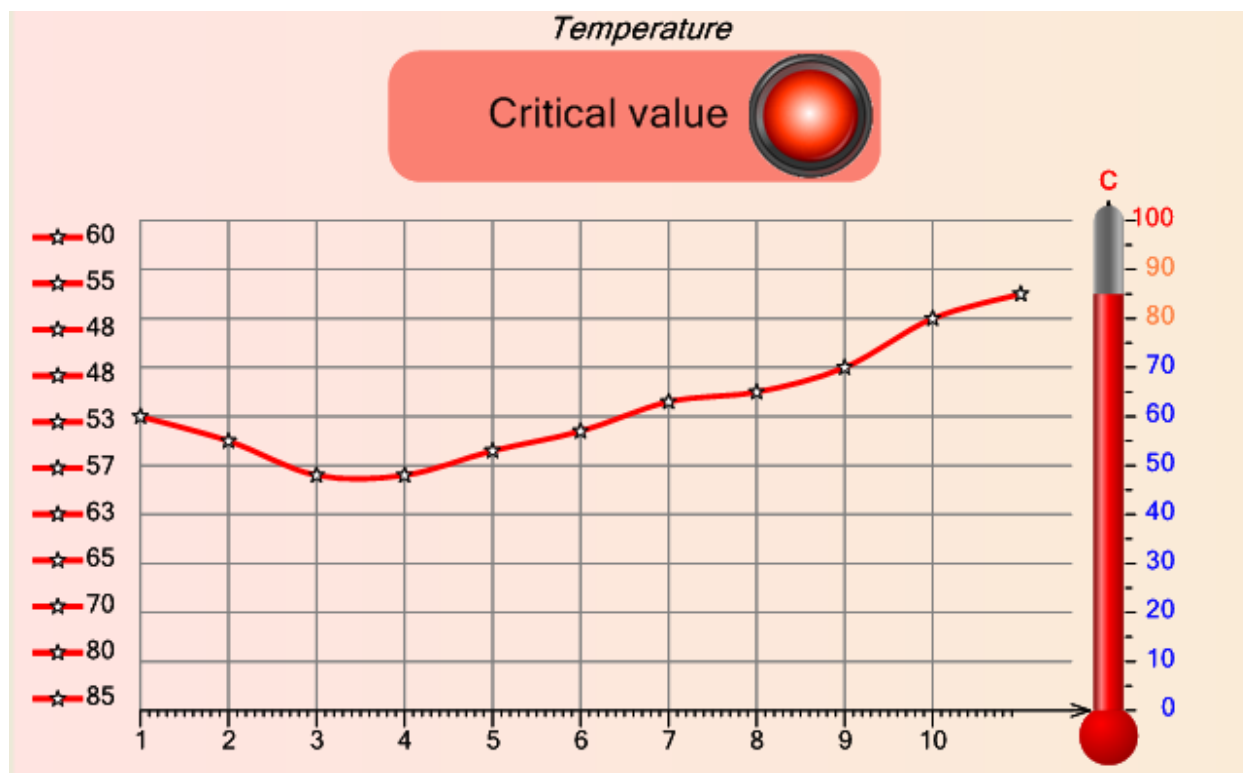


Table of Content

Using DashboardViewer.....	3
Using dashboard in Web forms application.....	5

Using DashboardViewer

The DashboardViewer control provides abilities to combine features of SharpShooter Charts charts and SharpShooter Gauges gauges. This control allows displaying of a chart, including various elements and gauges in Windows Forms.



In the picture you can see the DashboardViewer control displaying temperature value as the Thermometer gauge and the chart line displaying history of the previous temperature values. The Light indicator that lights up when the current temperature value is higher than the defined one is located in the chart as well. One and the same axis is used for the chart and Thermometer indicator. This example can be found in the Dashboard Sample Center: the Using DashboardViewer node.

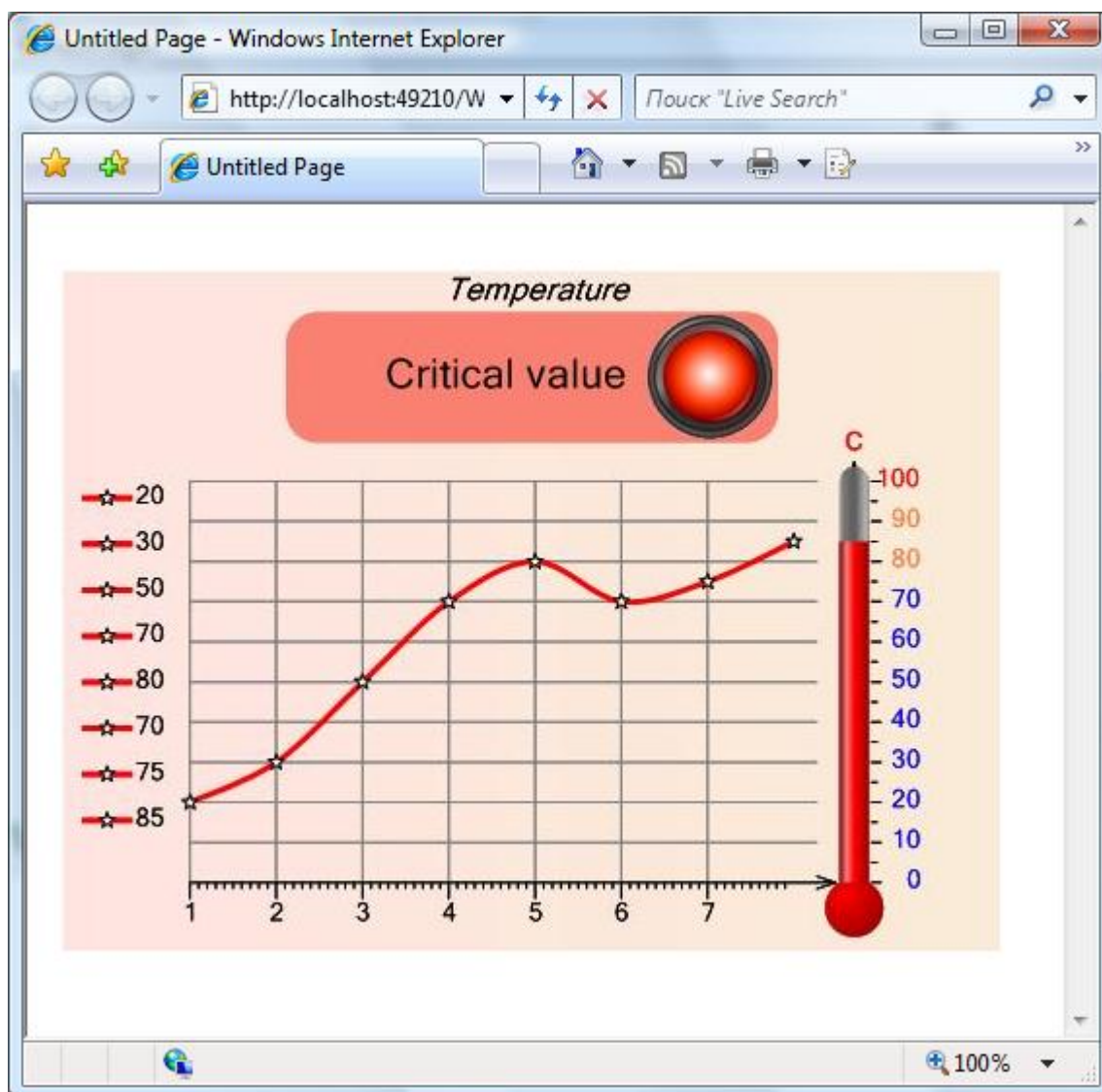
The DashboardViewer control provides visual designer that allows the creation, customization of charts and gauges and combination of these elements. In the Designer, all SharpShooter Gauges gauge elements and all SharpShooter Charts chart elements are available. Expressions for the element properties and the TestTool mode for testing interactive instruments are available as well.

Using dashboard in Web forms application

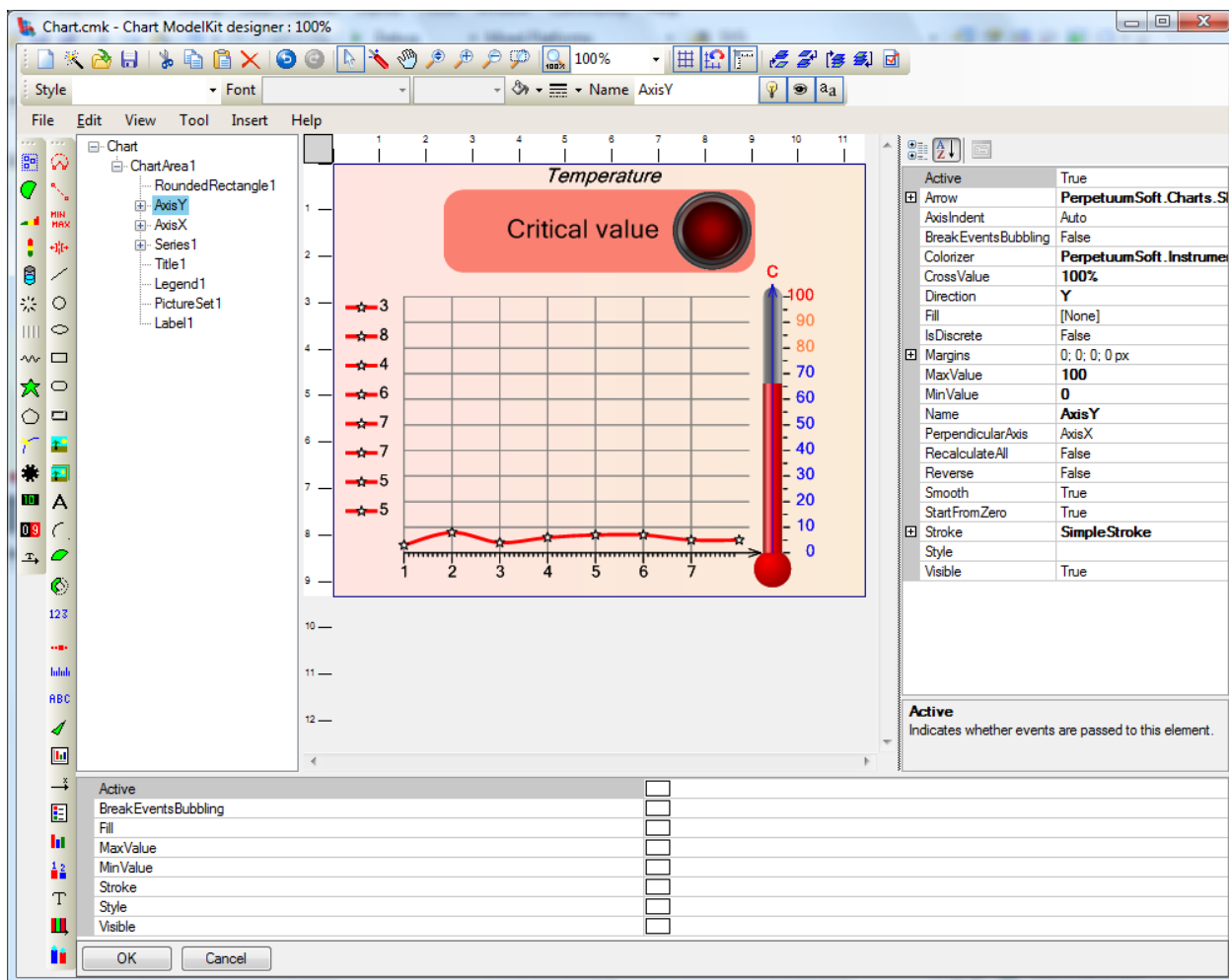
The WebDashboardViewer component is used to provide joint use of charts and instruments in Web forms applications. This component is similar to the DashboardViewer, but it is intended for displaying dashboards on Web forms.

The WebDashboardViewer component is a WebChartViewer descendant; that is why its use is similar. See "Using charts in Web forms application" chapter in the "SharpShooter Charts Documentation".

The WebDashboardViewer component allows the simultaneous display of chart and instruments.



The WebDashboardViewer designer functionality is extended; it is capable of creating both charts and instruments simultaneously.



If you have any questions regarding the integration with SharpShooter Dashboards don't hesitate to contact us at support@perpetuumsoft.com